

MULTIFUNCTIONAL DIGITAL SYSTEMS

Software Installation Guide

e-STUDIO 2505H

e-STUDIO 2505F

e-STUDIO 2007/2307/2507/2507i

Preface




Thank you for purchasing TOSHIBA Multifunctional Digital Systems. This manual explains how to install client software. Read this manual before use. Keep this manual within easy reach, and use it to configure an environment that makes best use of the e-STUDIO's functions.

■ How to read this manual



□ Symbols in this manual

To ensure correct and safe use of this equipment, this manual describes safety precautions according to the three levels shown below.

You should fully understand the meaning and importance of these items before reading this manual.

- | | |
|--|---|
|  WARNING | Indicates a potentially hazardous situation which, if not avoided, could result in death, serious injury, or serious damage, or fire in the equipment or surrounding objects. |
|  CAUTION | Indicates a potentially hazardous situation which, if not avoided, may result in minor or moderate injury, partial damage to the equipment or surrounding objects, or loss of data. |
|  Note | Indicates information to which you should pay attention when operating the equipment. |

Other than the above, this manual also describes information that may be useful for the operation of this equipment with the following signage:

- | | |
|--|--|
|  Tip | Describes handy information that is useful to know when operating the equipment. |
|  | Pages describing items related to what you are currently doing. See these pages as required. |

□ Screens and Operation Procedures

In this manual, the screens and the operation procedures in Windows are described for Windows 7.

The details on the screens may differ depending on how the equipment is used, such as the status of the installed options, the OS version and the applications.

□ Trademarks

- The official name of Windows XP is Microsoft Windows XP Operating System.
- The official name of Windows Vista is Microsoft Windows Vista Operating System.
- The official name of Windows 7 is Microsoft Windows 7 Operating System.
- The official name of Windows 8 is Microsoft Windows 8 Operating System.
- The official name of Windows Server 2003 is Microsoft Windows Server 2003 Operating System.
- The official name of Windows Server 2003 R2 is Microsoft Windows Server 2003 R2 Operating System.
- The official name of Windows Server 2008 is Microsoft Windows Server 2008 Operating System.
- The official name of Windows Server 2008 R2 is Microsoft Windows Server 2008 R2 Operating System.
- The official name of Windows Server 2012 is Microsoft Windows Server 2012 Operating System.
- Microsoft, Windows, Windows NT, and the brand names and product names of other Microsoft products are trademarks of Microsoft Corporation in the US and other countries.
- Other company and product names given in this manual or displayed in this software may be the trademarks of their respective companies.

END USER SOFTWARE LICENSE AGREEMENT

INSTALLING OR OTHERWISE USING THIS SOFTWARE PRODUCT CONSTITUTES YOUR ACCEPTANCE OF THE FOLLOWING TERMS AND CONDITIONS (UNLESS A SEPARATE LICENSE IS PROVIDED BY THE SUPPLIER OF APPLICABLE SOFTWARE IN WHICH CASE SUCH SEPARATE LICENSE SHALL APPLY). IF YOU DO NOT ACCEPT THESE TERMS, YOU MAY NOT INSTALL OR USE THIS SOFTWARE, AND YOU MUST PROMPTLY RETURN THE SOFTWARE TO THE LOCATION WHERE YOU OBTAINED IT.

GRANT OF LICENSE:

This is a legal agreement between you, the end-user ("You"), and TOSHIBA TEC Corporation ("TTEC") and its suppliers. This software, fonts (including their typefaces) and related documentation ("Software") is licensed for use with the system CPU on which it was installed ("System") in accordance with the terms contained in this Agreement. This Software is proprietary to TTEC and/or its suppliers. TTEC and its suppliers disclaim responsibility for the installation and/or use of this Software, and for the results obtained by using this Software. You may use one copy of the Software as installed on a single System, and may not copy the Software for any reason except as necessary to use the Software on a single System. Any copies of the Software shall be subject to the conditions of this Agreement. You may not, nor cause or permit any third party to, modify, adapt, merge, translate, reverse compile, reverse assemble, or reverse engineer the Software. You may not use the Software, except in accordance with this license. No title to the intellectual property in the Software is transferred to you and full ownership is retained by TTEC or its suppliers. Source code of the Software is not licensed to you. You will be held legally responsible for any copyright infringement, unauthorized transfer, reproduction or use of the Software or its documentation.

TERM:

This license is effective until terminated by TTEC or upon your failure to comply with any term of this Agreement. Upon termination, you agree to destroy all copies of the Software and its documentation. You may terminate this license at any time by destroying the Software and its documentation and all copies.

DISCLAIMER OF WARRANTY:

This Software is provided "AS IS" without warranty of any kind, either express or implied, including, but not limited to, the implied warranties of merchantability, fitness for a particular purpose, title, and non-infringement. TTEC and its suppliers disclaim any warranty relating to the quality and performance of the Software. If the Software proves defective, You (and not TTEC or its suppliers) shall be responsible for the entire cost of all necessary servicing, repair or correction. TTEC and its suppliers do not warrant that the functions contained in the Software will meet your requirements or that the operation of the Software will be uninterrupted or error free.

LIMITATION OF LIABILITY:

IN NO EVENT WILL TTEC OR ITS SUPPLIERS BE LIABLE TO YOU FOR ANY DAMAGES, WHETHER IN CONTRACT, TORT, OR OTHERWISE (except personal injury or death resulting from negligence on the part of TTEC or its SUPPLIERS), INCLUDING WITHOUT LIMITATION ANY LOST PROFITS, LOST DATA, LOST SAVINGS OR OTHER INCIDENTAL, SPECIAL OR CONSEQUENTIAL DAMAGES ARISING OUT OF THE USE OR INABILITY TO USE THE SOFTWARE, EVEN IF TTEC OR ITS SUPPLIERS HAVE BEEN ADVISED OF THE POSSIBILITY OF SUCH DAMAGES, NOR FOR THIRD PARTY CLAIMS.

U.S. GOVERNMENT RESTRICTED RIGHTS:

The Software is provided with RESTRICTED RIGHTS. Use, duplication or disclosure by the U.S. Government is subject to restrictions set forth in subdivision (b)(3)(ii) or (c)(i)(ii) of the Rights in Technical Data and Computer Software Clause set forth in 252.227-7013, or 52.227-19 (c)(2) of the DOD FAR, as appropriate. Contractor/Manufacturer is TOSHIBA TEC Corporation, 1-11-1, Ohsaki, Shinagawa-ku, Tokyo, 141-8562, Japan

GENERAL:

You may not sublicense, lease, rent, assign or transfer this license or the Software. Any attempt to sublicense, lease, rent, assign or transfer any of the rights, duties or obligations hereunder is void. You agree that you do not intend to, and will not ship, transmit (directly or indirectly) the Software, including any copies of the Software, or any technical data contained in the Software or its media, or any direct product thereof, to any country or destination prohibited by the United States Government. This license shall be governed by the laws of Japan or, at the election of a Supplier of TTEC concerned with a dispute arising from or relating to this Agreement, the laws of the Country designated from time to time by the relevant Supplier of TTEC. If any provision or portion of this Agreement shall be found to be illegal, invalid or unenforceable, the remaining provisions or portions shall remain in full force and effect.

YOU ACKNOWLEDGE THAT YOU HAVE READ THIS LICENSE AGREEMENT AND THAT YOU UNDERSTAND ITS PROVISIONS. YOU AGREE TO BE BOUND BY ITS TERMS AND CONDITIONS. YOU FURTHER AGREE THAT THIS LICENSE AGREEMENT CONTAINS THE COMPLETE AND EXCLUSIVE AGREEMENT BETWEEN YOU AND TTEC AND ITS SUPPLIERS AND SUPERSEDES ANY PROPOSAL OR PRIOR AGREEMENT, ORAL OR WRITTEN, OR ANY OTHER COMMUNICATION RELATING TO THE SUBJECT MATTER OF THIS LICENSE AGREEMENT.

TOSHIBA TEC Corporation, 1-11-1, Ohsaki, Shinagawa-ku, Tokyo, 141-8562, Japan

CONTENTS

Preface.....	1
END USER SOFTWARE LICENSE AGREEMENT	2
Chapter 1 BEFORE INSTALLATION	
<hr/>	
Before Installation	6
Software on the Client Utilities/User Documentation DVD	6
System requirements.....	6
Chapter 2 INSTALLING DRIVERS	
<hr/>	
Installing Drivers	8
Connection environment.....	8
Installing the drivers.....	10
Chapter 3 UNINSTALLING DRIVERS	
<hr/>	
Uninstalling Drivers.....	24
INDEX	27

BEFORE INSTALLATION

Before Installation

This section helps you to plan an installation suited to your environment.

■ Software on the Client Utilities/User Documentation DVD

- **Printer driver**
Allows you to use this equipment as a printer when it is connected to a Windows computer.
- **Scanner driver**
Allows you to scan the originals set in this equipment remotely from your Windows computer and send the image to a TWAIN-compliant application.
- **N/W Fax driver**
Allows you to send electronic documents from your Windows computer to one or more destinations.

Tip

The N/W-Fax driver is not available for the e-STUDIO2505H.

■ System requirements

- **CPU**
1 GHz minimum (1 GHz or faster recommended)
- **Memory**
32-bit processor
 - 1 GB (2 GB recommended)
 64-bit processor
 - 2 GB (4 GB recommended)
- **Interface**
USB 2.0 (Hi-Speed)
- **OS**
 Windows XP Service Pack 2 or later
 Windows Vista All Service Packs
 Windows 7 All Service Packs
 Windows 8 All Service Packs
 Windows Server 2003 Service Pack 1 or later
 Windows Server 2003 R2 All Service Packs
 Windows Server 2008 All Service Packs
 Windows Server 2008 R2 All Service Packs
 Windows Server 2012 All Service Packs

INSTALLING DRIVERS

Installing Drivers

This section describes how to install the printer, scanner, and N/W Fax drivers. Installing the drivers requires the administrator authority.

■ Connection environment

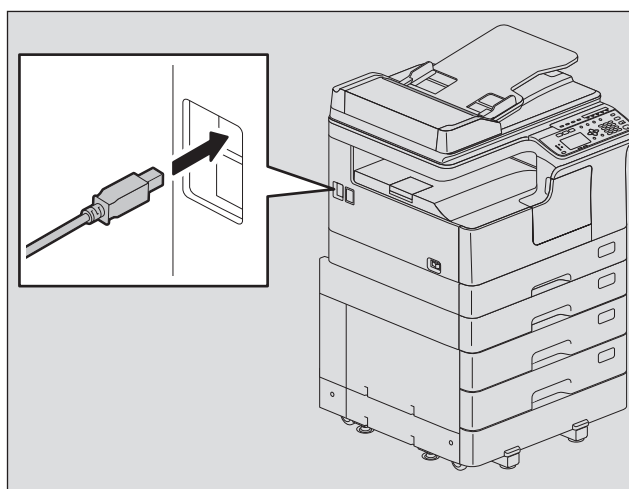
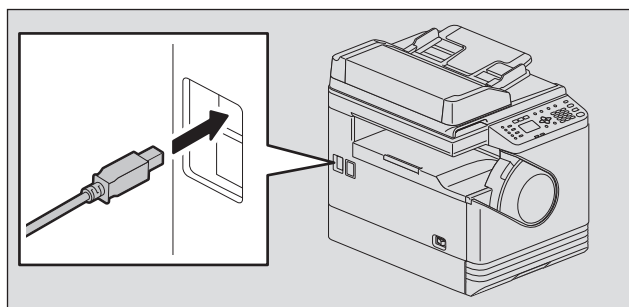
A USB connection or network connection is available.

□ USB connection

Before installing the drivers, connect the equipment and the computer with a USB cable.

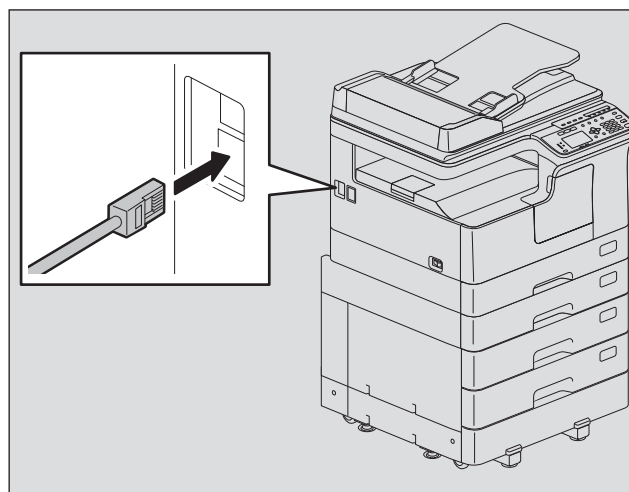
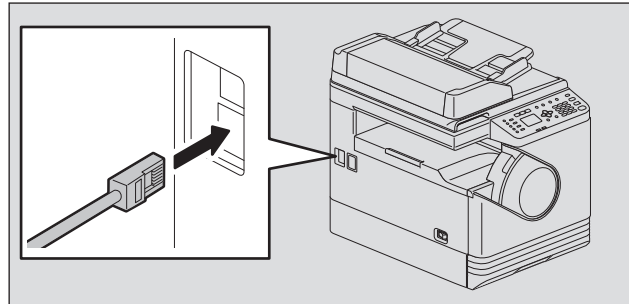
Note

Do not turn the power ON at this stage. Follow the on-screen instructions.



□ Network connection

Before installing the drivers, connect the equipment to the network, and then turn on the equipment.



■ Installing the drivers

Install the drivers using the installer or the Windows Plug and Play function.

Notes

- Close any running software, such as an antivirus program, before installing the drivers.
- For Windows 7, Windows 8, Windows Server 2008 R2, or Windows Server 2012, use the installer to install the drivers.

📖 P.10 “Installing the drivers using the installer”

□ Installing the drivers using the installer

1 Check if the equipment is turned on or off.

Make sure the equipment is turned off for a USB connection and turned on for the network connection.

2 Insert the Client Utilities/User Documentation DVD into your computer.

- The installer automatically starts and opens the installation dialog box.
- If the installer does not automatically start, double-click “Setup.exe” in the DVD.

3 Select the model.

Tip

This dialog is displayed when e-STUDIO2505H or e-STUDIO2505F is used.



4 Click “Install/Uninstall All Drivers” and click [Next].

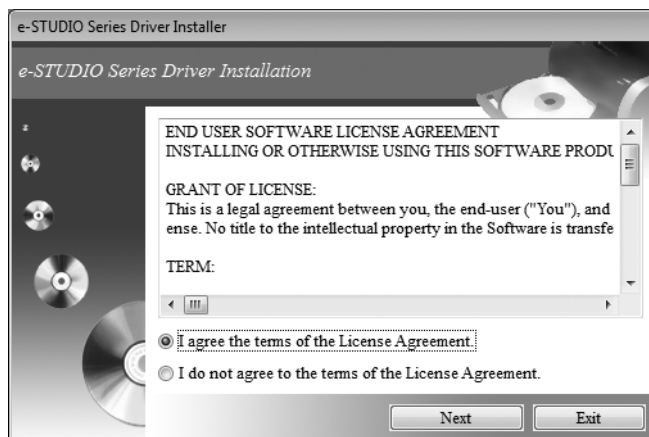
Although you can select “Install/Uninstall Scanner Driver”, “Install/Uninstall Printer Driver” or “Install/Uninstall N/W-Fax Driver” to install the drivers respectively, select “Install/Uninstall All Drivers” at this step to install them in one go.

Tip

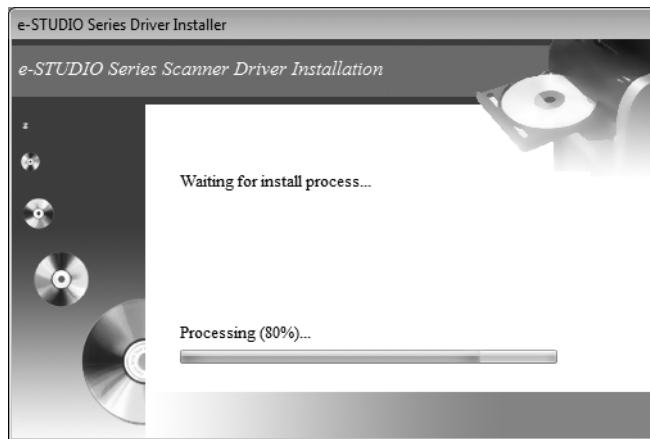
N/W-Fax driver is not available for the e-STUDIO2505H.



5 Select “I agree the terms of the License Agreement.” and click [Next].



6 The installer begins to install the scanner driver and the installation progress screen is displayed.

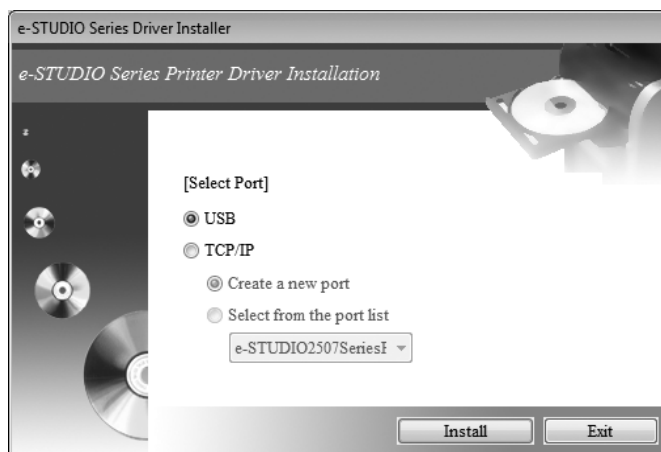


Note

If a message prompting you to confirm the device software installation appears, select the option of trusting the publisher such as [Install] or [Continue Anyway] to proceed with the installation.

7 Select [USB] or [TCP/IP], and then click [Install].

The installer begins to install the printer driver.

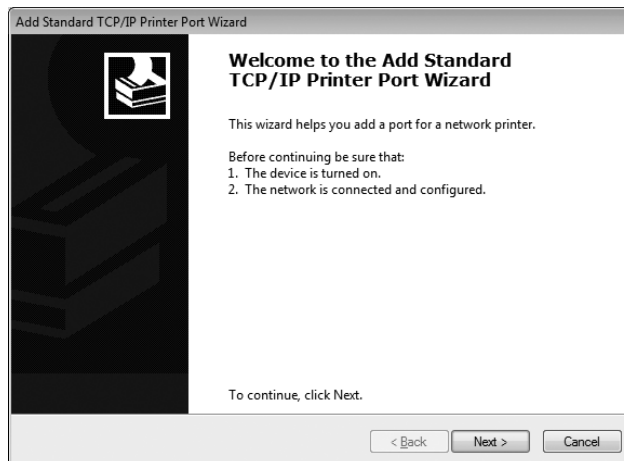


- When you select [USB], proceed to step 12.
- When you select [TCP/IP], select [Create a new port] or [Select from the port list].

Tip

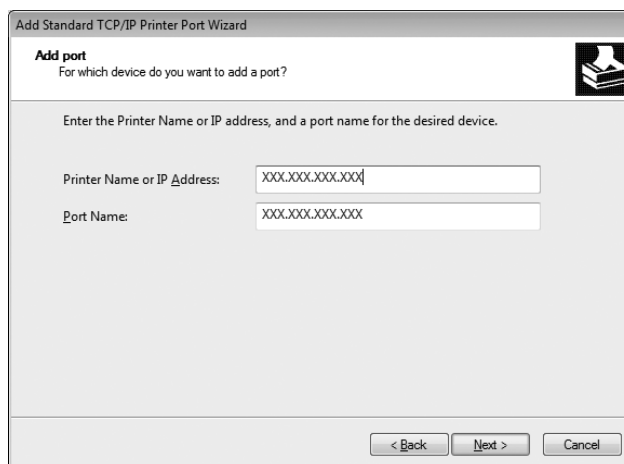
When you select [Select from the port list], select a port from the list.

8 When you select [Create a new port] in step 7, the [Add Standard TCP/IP Printer Port Wizard] dialog box appears. Click [Next].



2

9 Enter the IP address of this equipment in the [Printer Name or IP Address] box and click [Next].



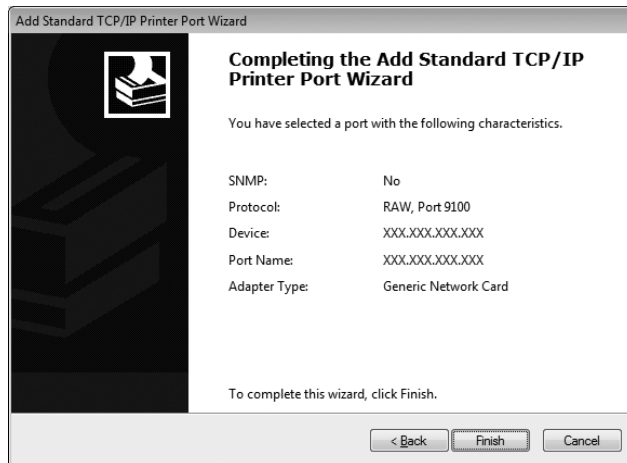
In the [Port Name] box, the port name is automatically entered according to the IP address or DNS name entered in the [Printer Name or IP Address] box. “_02” is added at the end of the IP address that is displayed in the [Port Name] box.

Tip

When the following dialog box is displayed, select [Standard] and click [Next].

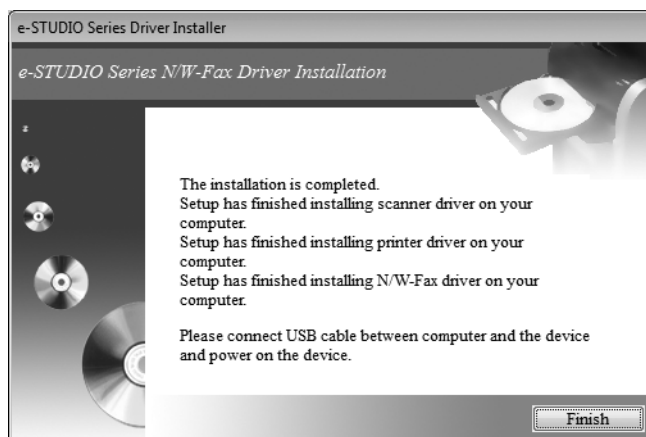


10 Click [Finish].



11 After installing the printer driver, repeat steps 7 through 10 to install the N/W-Fax driver.

12 When you select [USB] in step 7: Make sure of the connection between the equipment and the computer, turn on the equipment, and then click [Finish]. When you select [TCP/IP] in step 7: Click [Finish].



- When you use Windows 8, Windows 7, Windows Vista, Windows Server 2008, Windows Server 2008 R2, Windows Server 2012, or when you use Windows XP, Windows Server 2003, Windows Server 2003 R2 and select [TCP/IP], skip to step 17.
- When you use Windows XP, Windows Server 2003, or Windows Server 2003 R2 and select [USB], continue to the next step. After you connect the equipment to your computer and turn it on, Windows will find new hardware and start the wizard. The wizard works twice to install the scanner and printer drivers.

13 Make sure that “No, not this time” is selected and click [Next].

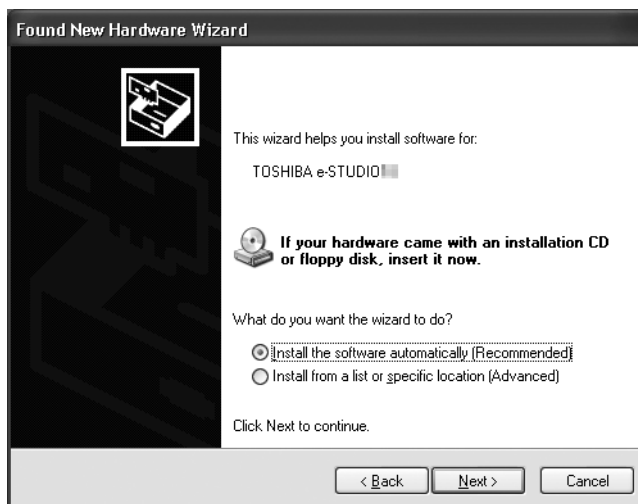
Windows automatically detects the equipment and starts the wizard for the succeeding installation.



2

14 Make sure that “Install the software automatically (Recommended)” is selected and click [Next].

Wait while the wizard is searching and installing the software.

**15 Click [Finish].****16 Repeat steps 13 to 15 to complete the wizard.**

17 The installation is complete.

- After installing the drivers, remove the DVD from the computer.
- You are ready to print and scan documents.

Tip

The Installer may ask you to restart your computer. If it does, select “Yes, I want to restart my computer now.” to restart your computer.

□ Installing the drivers using Plug and Play

Before installing the drivers, connect the equipment and your Windows computer with a USB cable. When using Plug and Play, first the scanner driver is installed, and then the printer driver.

Tip

An additional printer wizard can also be used to install the printer driver. To use the additional printer wizard, select the USB port or the network port that the equipment is connected to using "Choose a Printer Port".

2

Installing the drivers on Windows Vista / Windows Server 2008

1 Connect this equipment to the computer using a USB cable, and then start the computer.

Note

Do not connect or disconnect the USB cable when starting up the computer.

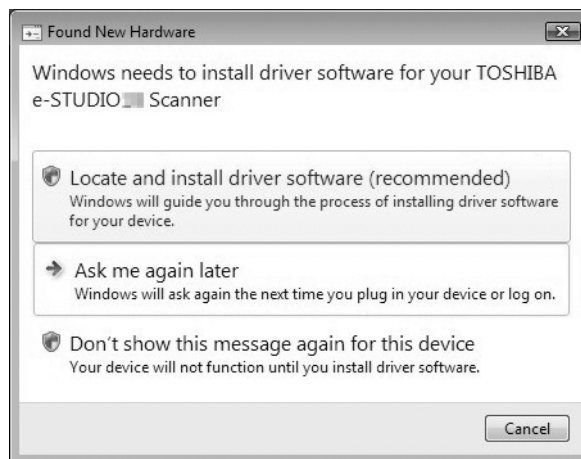
2 Turn on the equipment.

The Found New Hardware dialog box appears.

If it does not appear, turn off this equipment, and then wait approximately 10 seconds before turning it on again. If you turn this equipment on immediately after turning it off, it may not function correctly.

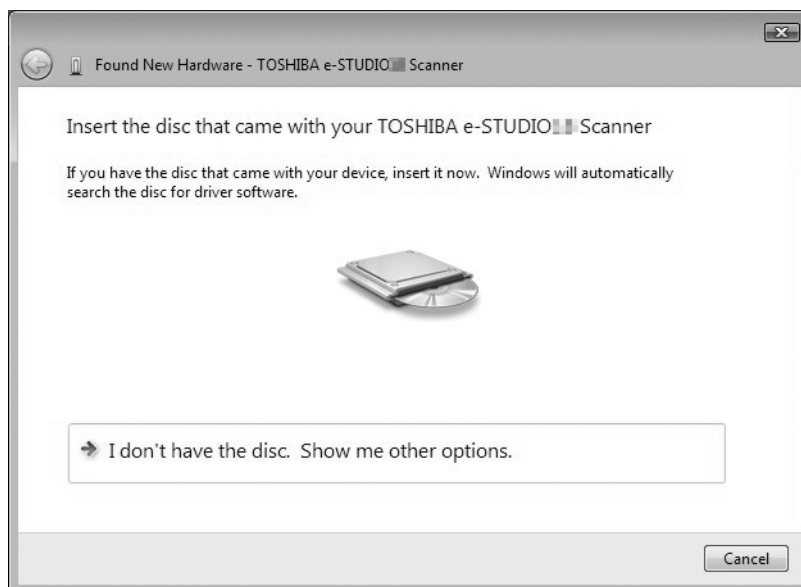
3 Click "Locate and install driver software (recommended)".

The dialog box requesting the disk (Client Utilities/User Documentation DVD) appears.



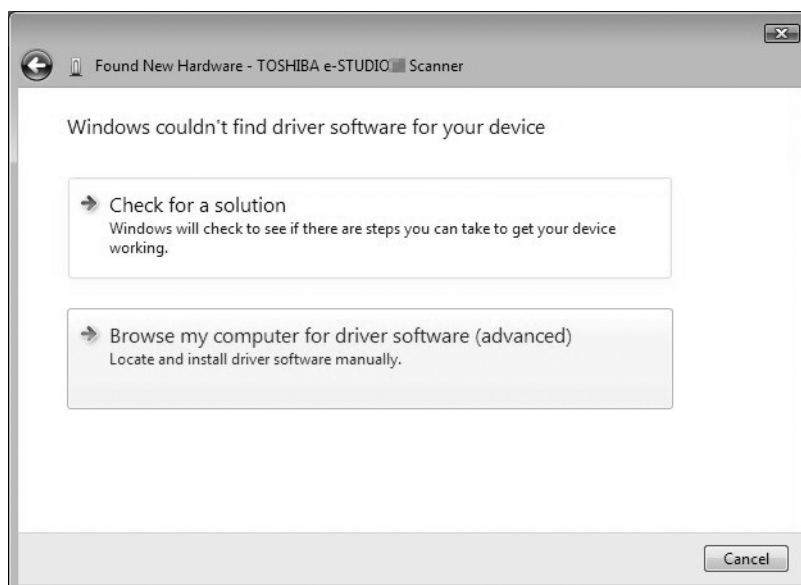
If the User Account Control dialog box appears, click [Allow] or [Continue].

4 Click “I don't have the disc. Show me other options”.



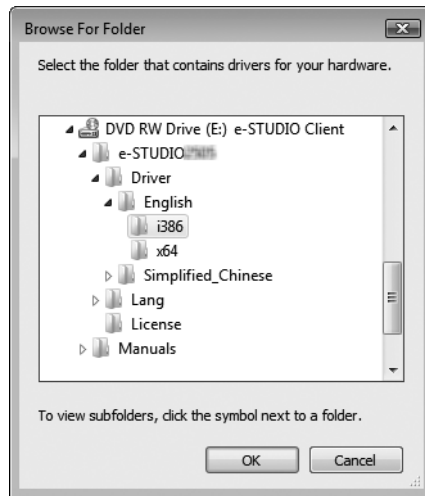
5 Insert the Client Utilities/User Documentation DVD into the computer.

6 Click “Browse my computer for driver software (advanced)”.



7 Select the folder on the DVD that contains the drivers, and then click [OK].

Select the folder according to the language and operating system you are using. For example, for a 32-bit English OS, select “..\Driver\English\i386”.



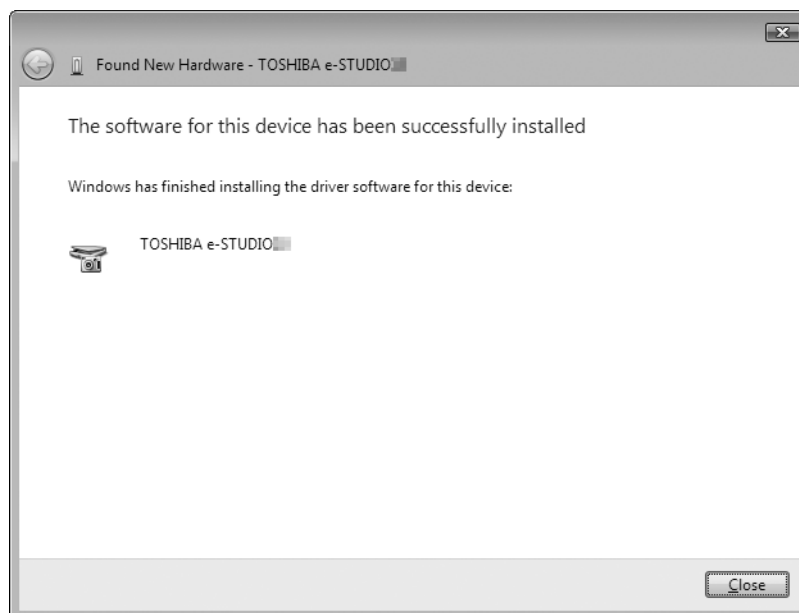
8 Click [Next].

If the Windows Security dialog box appears, click [Install this driver software anyway].

Note

If a message prompting you to confirm the device software installation appears, select the option of trusting the publisher such as [Install] or [Continue Anyway] to proceed with the installation.

9 When the installation completes, click [Close].



The Found New Hardware dialog box appears again and the installation of the printer driver begins.

10 Repeat steps 4 through 9 to install the printer driver.

11 After installation, make sure the icon for the installed printer appears in the Printers window.

12 Remove the DVD from the computer.

Installing the drivers on Windows XP / Windows Server 2003 / Windows Server 2003 R2

- 1** Connect this equipment to the computer using a USB cable, and then start the computer.

Note

Do not connect or disconnect the USB cable when starting up the computer.

- 2** Insert the driver Client Utilities/User Documentation DVD into the computer.
- 3** Turn on the equipment.

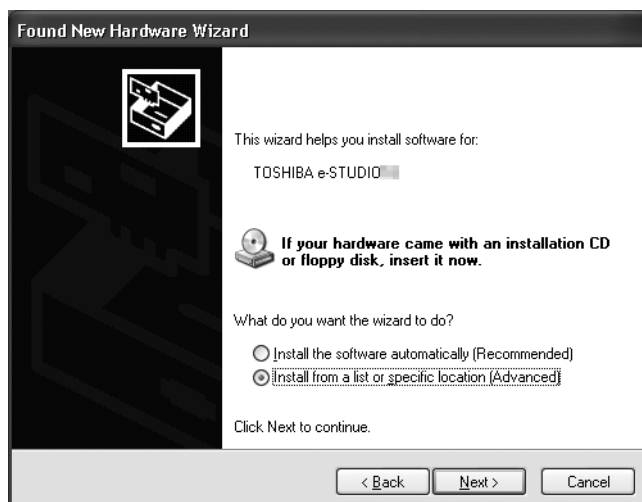
The Found New Hardware Wizard dialog box appears.

- If it does not appear, turn off this equipment, and then wait approximately 10 seconds before turning it on again. If you turn this equipment on immediately after turning it off, it may not function correctly.
- If “Windows Update” appears, select [No].

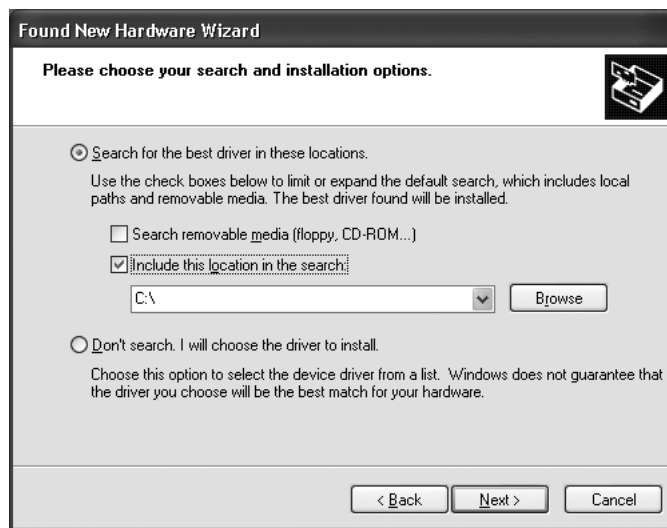
- 4** Click “No, not this time” and click [Next].



- 5** Click “Install from a list or specific location (Advanced)” and click [Next].



- 6** Click “Search for the best driver in these locations.”, select “Include this location in the search:”, and then click [Browse].



- 7** Select the folder on the DVD that contains the drivers, and click [OK].

Select the folder according to the language and operating system you are using. For example, for 32-bit English OS, select “..\Driver\English\i386”.



- 8** Click [Next], and wait while the driver is located and installed.

When the Windows Security dialog box appears, click [Continue Anyway].

9 When the installation completes, Click [Finish].

The Found New Hardware Wizard dialog box appears again and the installation of the printer driver begins.



10 Repeat steps 4 through 9 to install the printer driver.

11 After installation, make sure the printer driver icon appears in the Printers and Faxes window.

12 Remove the DVD from the computer.

UNINSTALLING DRIVERS

Uninstalling Drivers

This section explains how to uninstall the printer, scanner, and N/W Fax drivers. Uninstalling the drivers requires the administrator authority.

When you want to uninstall the printer driver, see the following section:

1 Insert the Client Utilities/User Documentation DVD into your computer.

- The installer automatically starts and opens the uninstallation dialog box.
- If the installer does not automatically start, double-click "Setup.exe" in the DVD.

2 Select the model.

Tip

This dialog is displayed when e-STUDIO2505H or e-STUDIO2505F is used.

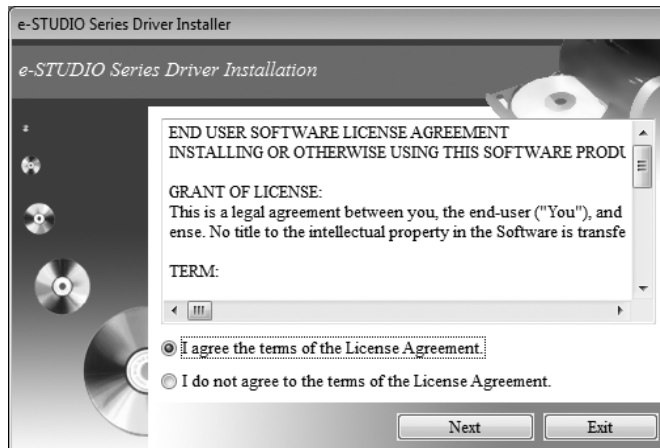


3 Click "Install/Uninstall All Drivers" and click [Next].

Although you can select "Install/Uninstall Scanner Driver", "Install/Uninstall Printer Driver" or "Install/Uninstall N/W-Fax Driver" to uninstall the drivers respectively, select "Install/Uninstall All Drivers" at this step to uninstall them in one go.



4 Select “I agree the terms of the License Agreement.” and click [Next].



5 Confirm the uninstallation message and click [Execute].

- Wait until the completion message appears.
- Click [Exit] several times to quit the operation.



6 Click [Finish].



7 Repeat steps 5 and 6 to uninstall all drivers.

INDEX

C

Client Utilities/User Documentation DVD6

I

Installer10

N

N/W Fax driver6

Network connection9

P

Printer Driver6

S

Scanner Driver6

System Requirements6

T

TCP/IP12

U

Uninstalling24

USB12

USB connection8

MULTIFUNCTIONAL DIGITAL SYSTEMS

Software Installation Guide

 e-STUDIO2505H

 e-STUDIO2505F

 e-STUDIO2007/2307/2507/2507i

TOSHIBA TEC CORPORATION

1-11-1, OSAKI, SHINAGAWA-KU, TOKYO, 141-8562, JAPAN

